



WAREMA climatronic®



WAREMA climatronic®

Energy savings made easy

A great number of functions have to be coordinated in a building to ensure that a consistent climate can be maintained throughout the whole year.

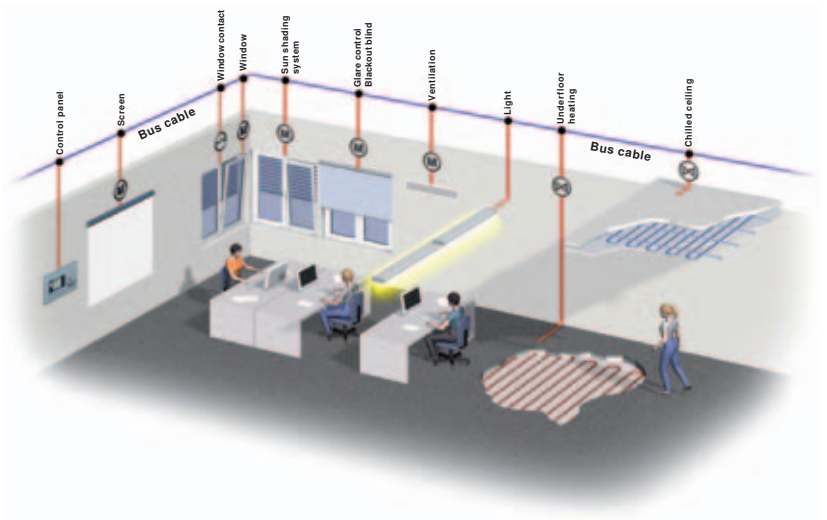
The following criteria should be complied with:

- sun shading system
- fans
- windows
- heating
- light
- cooling

and other factors have to interact in order to respond to outside weather conditions.

Today around 40% of our primary energy is used for the construction and operation of buildings. A large part of this energy could be saved in the future, with window and facade systems playing an essential role. For the purposes of energy efficiency and comfort they have to be able to react flexibly to the demands of the users of the buildings as well as to outside influences.

Intelligent control systems therefore play an ever increasing role in the energy optimisation of buildings. The WAREMA climatronic® offers a multitude of functions which work together with the sun shading systems to reduce the energy demand in the building and create the perfect feel-good atmosphere.





Summer operation

The classic function of sun shading systems, protection from overheating, can also have an immense impact on the energy demand of buildings. Where buildings are subject to active cooling, the energy saving for air-conditioning can amount to as much as 95%. In many cases the installation of an air-conditioning system can be superfluous, substantially reducing not only the building costs but also the operating costs of a property. Control systems in combination with sun shading systems can considerably reduce the effect of solar radiation

Winter operation

In winter the desired energy savings in buildings can be achieved by means of transparent surfaces. The short-wave solar radiation entering through the glazing is absorbed and converted to heat. To make use of the solar energy gain to support the heating the WAREMA climatronic® features automatic temperature-controlled sun shading. This feature moves the sun shading system to certain positions depending on predefined outside temperatures. For example, the sun shading system will remain open in winter when the temperature falls below the defined value.

Lighting

In modern administration buildings up to 25% of the energy demand is required for artificial lighting. Modern daylight-technology can significantly reduce the energy consumption for artificial lighting. One of the aims of energy optimisation is to use natural lighting as efficiently as possible in order to keep the use of artificial lighting to a minimum. A practical combination of sun shading systems and a coordinated control system such as the WAREMA climatronic® can help to reduce the artificial lighting component, creating a comfortable feel-good atmosphere for the users of the building in addition to reducing the energy consumption.

Slat tracking

Slat tracking presents an option for daylight utilisation with external venetian blinds. The WAREMA climatronic® aligns the slats according to the position of the sun in order to always provide optimal lighting and heat protection. Slat tracking also ensures the contact with the outside world that is so important for well-being, providing thermal comfort.

All this is brought to you by the WAREMA climatronic®.



Slats closed



Slats in intermediate position



Slats in horizontal position

WAREMA climatronic® control panel

Perfect visualisation and elegant design

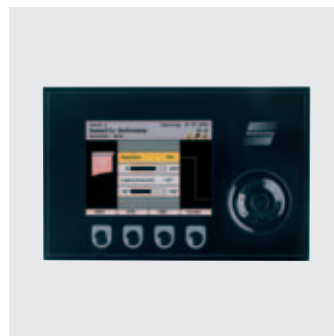
The WAREMA climatronic® has up to 32 channels available for driving power consumers in a building.

The motion commands are transmitted to the actuators via the Climabus. In this way, up to 1,200 power consumers can be managed by this control. The actuators control the sun shading and window drives and switch or dim the light or the ventilation. The integrated slat tracking adjusts the slats of your external venetian blinds according to the position of the sun, always providing maximum transparency from inside to outside while still ensuring glare protection.





The WAREMA climatronic® control panel stands out due to its elegant design and an especially user-friendly interface. All settings and measurements are represented as plain text or as icons on a clearly arranged display. With its multi-functional dial, glass sensor keys and self-explanatory menu, the WAREMA climatronic® is exceptionally user-friendly. This ensures that you can always see at a glance what is going on and can switch to manual mode or change the settings at any time. The control unit contains an EWFS radio receiver for a remote control. The simple elegance, the flat design and three different colour variants of the WAREMA climatronic® control panel adapt to any room design and combine variety and precision in a small unit.



Set-up wizard

Both the control panel and the PC software provide a set-up wizard to facilitate set-up. The wizard guides you through clear menus, ensuring that important settings are not forgotten.



WAREMA climatronic® actuators

Bespoke combinations meet the highest requirements

The system can be readily extended with the WAREMA climatronic® actuators. The outputs of the actuators switch or dim the light, control the sun shading system, the windows and many other products. The actuators for 4- or 6-drives are available surface-mounted, flush-mounted or for installation within a distribution cabinet. In this way, the control will blend in wherever it is fitted.

The actuators are equipped with interchangeable micro fuses to protect the connected products and the flexible motor service lines. Window contacts (reed contacts etc.) can be connected to the actuators on site for locking individual motors, e.g. when windows or patio doors are open.



WAREMA climatronic® Weather station

Intelligence in a small package

With a height of 13 cm the WAREMA climatronic® weather station is the smallest and most compact of its kind – but it has a lot to offer!

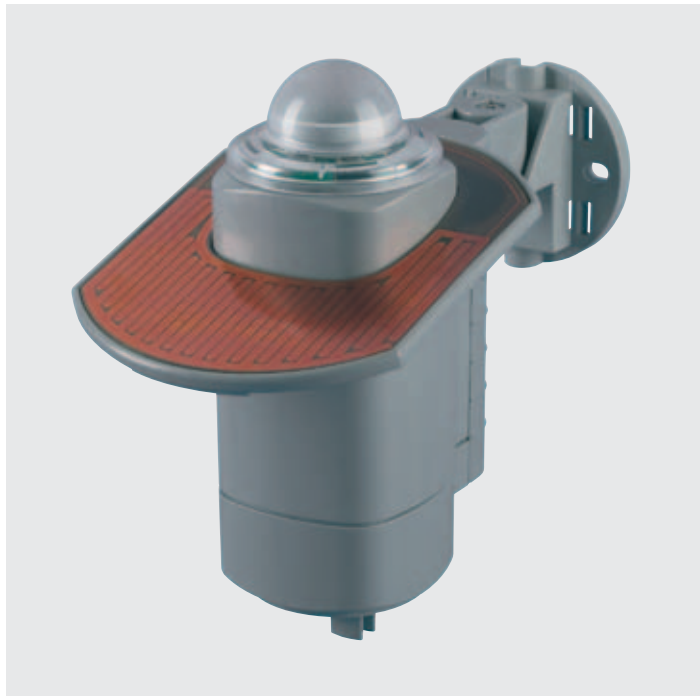
It carries out separate measurements for north, west, south and east:

- wind speed
- wind direction
- outdoor brightness

In addition the innovative weather station supplies exact data for:

- precipitation
- outside temperature
- icing

All this is completely carried out without moving parts, minimising subsequent maintenance work. The integrated radio clock receiver DCF-77 always supplies the WAREMA climatronic® with real time. The small and beautifully designed weather station can be flexibly mounted, on either a wall or a mast.



WAREMA climatronic® interfaces

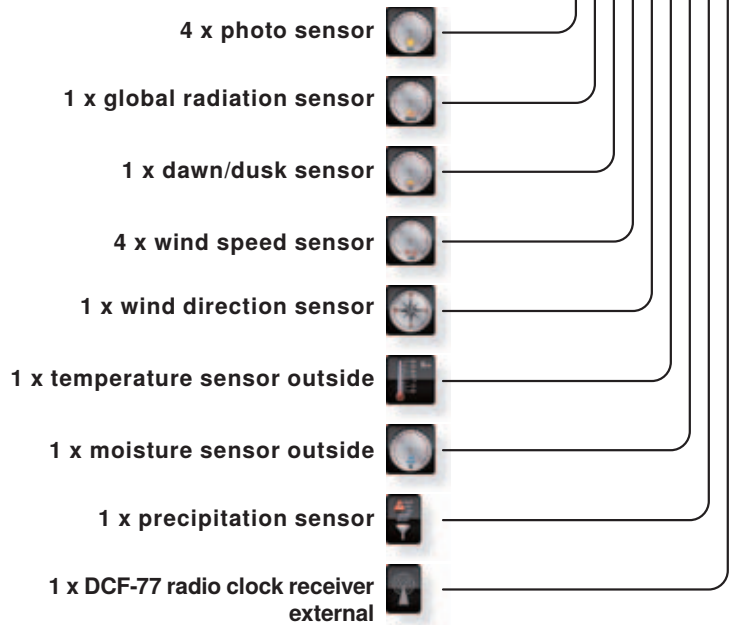
Technology for additional convenience and safety

WAREMA climatronic® Sensor Interface

The WAREMA climatronic® sensor interface allows the integration of numerous conventional sensors into a WAREMA climatronic® system when increased quantity and quality of the measurement data are required. Up to 3 sensor interfaces can be integrated into a climatronic® system.

WAREMA climatronic® Tableau Interface

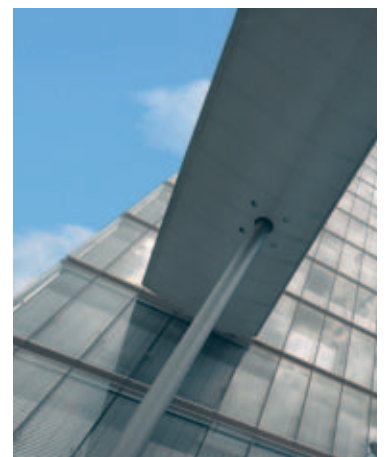
The WAREMA climatronic® tableau interface allows the connection of additional switches and push-buttons to a WAREMA climatronic® system, enabling the creation of control panels for operating all services connected to the WAREMA climatronic®. Each connected switch/push-button can be assigned to channels, groups and scenarios. Up to 144 additional external push-buttons can be integrated into a WAREMA climatronic® system by using the tableau interface.



(Number of sensors per sensor interface)



Photo: Gerald Zugmann



WAREMA climatronic® system principle

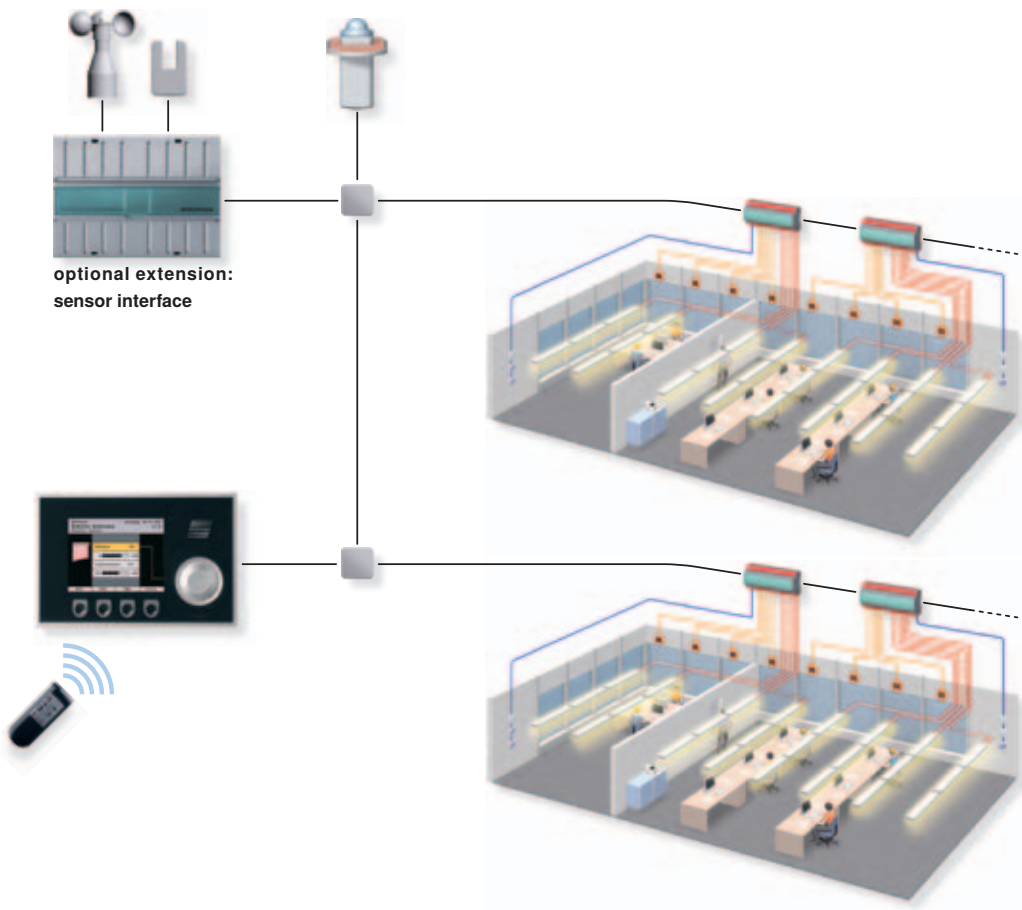
Innovative technology presented clearly

The WAREMA climatronic® is a bus system which allows modular extension. It consists of a multifunctional operating panel with a graphic display, weather sensors and actuators. Actuators are intelligent devices for driving motors and additional devices in a bus system. All required devices in this 'climabus system' communicate via a shared data line (bus line). The climabus, a bus system developed by WAREMA, fills the gap between conventional control systems with limited functionality and the high-end bus systems with near unlimited functionality such as the LonWorks® or KNX bus system.

The WAREMA climatronic® therefore combines the advantages of conventional technology (simple handling and easy set-up) with the benefits of a bus system (high functionality and minimal cabling). Up to 1,200 devices can be controlled via

the climabus. The bus system can be extended with network components to allow flexible planning in large building structures.

The system has up to 32 channels available for driving all electrical devices. Each channel can either drive an individual sun shading product (e.g. a facade awning) or an entire group of similar sun shading products (e.g. a group of exterior venetian blinds). The motion commands are transmitted to the actuators via the climabus. The actuators control the sun shading and window drives and switch or dim the light or the ventilation. The integrated slat tracking adjusts the slats of your exterior venetian blinds according to the position of the sun, always providing maximum transparency from inside to outside while still ensuring glare protection.



WAREMA climatronic® Studio software

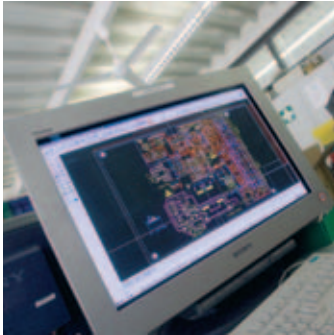
Variable configuration options and convenient operation

The WAREMA climatronic® studio software allows you to comfortably create and parameterise a WAREMA climatronic® project on the PC and subsequently transfer the project data to the control unit via SD card or USB cable. In addition you can also conveniently operate your products via a PC and view the history of measurements, triggers and faults.



WAREMA control systems

Products and services – Made in Germany



Development

All WAREMA control systems are developed and continuously optimised in our development department. This is where we create innovative control products in attractive housing designs in cooperation with WAREMA Kunststofftechnik und Maschinenbau GmbH. Thanks to our own development and unrivalled vertical integration, we are able to react flexibly to specific requirements for individual buildings.



Production

All WAREMA control products are manufactured in Marktheidenfeld. State-of-the-art manufacturing technology and a high level of automation guarantee a consistently high quality here. All WAREMA control products are fully tested before they leave our premises.



Planning

We offer project specific planning and consulting for our customers. We provide you with the appropriate connection diagrams for our sun shading controls as well as plans for the wiring, offering you precision and safety from concept to installation. Our field staff is always available to support you on site.



Despatch and installation

WAREMA has its own despatch department and is able to deliver by parcel post in urgent cases. Our control components are manufactured for stock, allowing us to process your orders quickly. We offer you a broad range of services – from technical consulting on site and installation of a WAREMA control system right up to individual telephone support. If required, WAREMA can also carry out the electrical installation work for you.



Sun. Light. WAREMA.

To find your nearest dealer please go to www.warema.com.au

or email sales@warema.com.au

© Shade Factor Pty Ltd Australasian Agents for WAREMA SE